



Image models for advertising

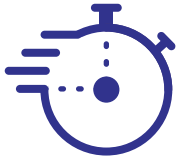


10 THERMA

Monopolar RF / 400W

[For Export Only]





20% Improved efficiency

5.0cm² tip provides more efficient coverage than 4.0cm²



Visible efficacy

Uniform distribution of RF energy allows effective treatment



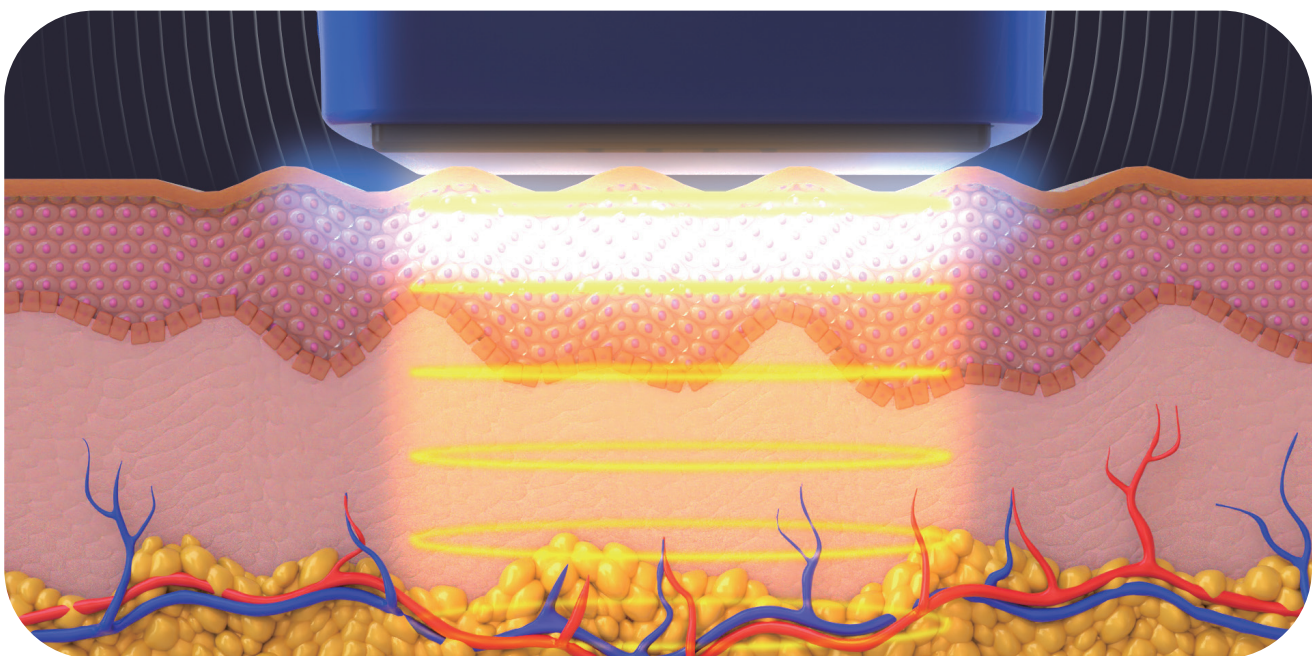
Long lasting improvements

Monopolar RF 400W 6.78MHz for maximum satisfaction



Less pain and no anesthesia

Next generation cooling system with vibration function



10THERMA is a medical class monopolar RF device that safely transfers heat to the dermis using cooling system to protect the epidermis, thereby regenerating collagen and improving skin elasticity and wrinkles.



Increased User Convenience

Continuous shot function

Continuous stamping possible with one start button

Cable cradle

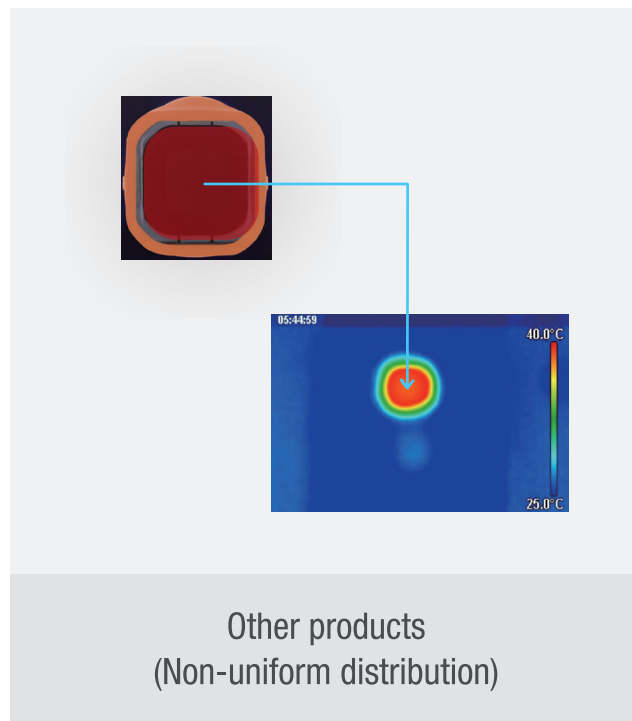
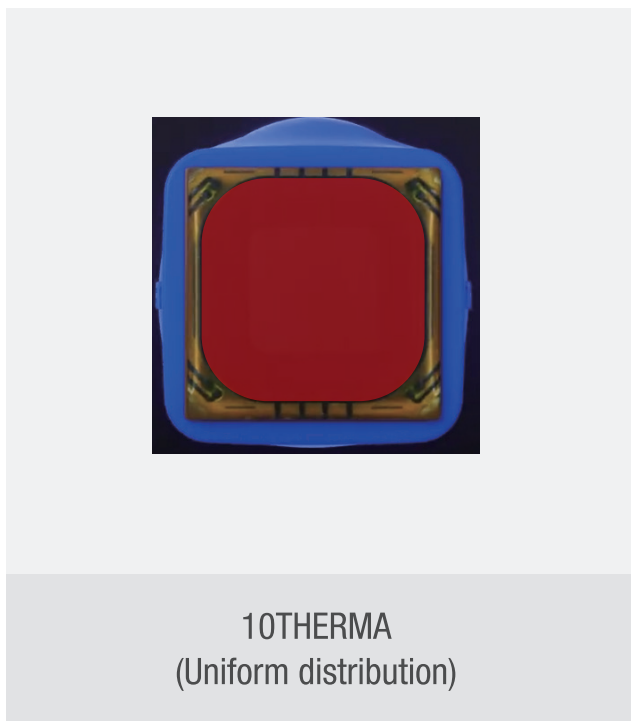
Convenient treatment possible with cable cradle

Improved gel viscosity

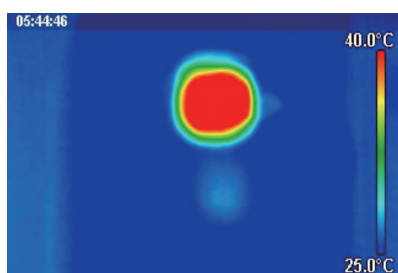
Convenient treatment possible with improved fluid gel viscosity

Uniform Heat Delivery Technology

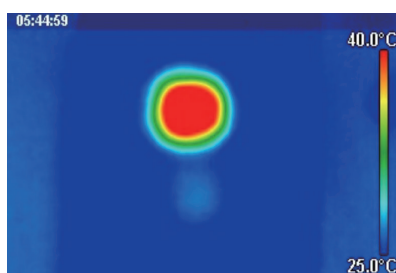
For Export Only



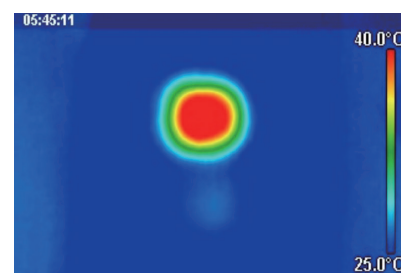
10THERMA Heating Uniformity



Immediately after one pulse



13 seconds after one pulse

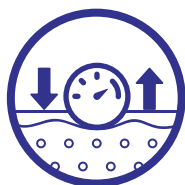


25 seconds after one pulse

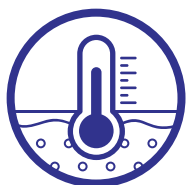
10THERMA tips are designed to have a uniform impedance distribution on the surface. If the impedance distribution is not uniform, the RF thermal energy distribution is not uniform as well.

Safe & Effective Treatment

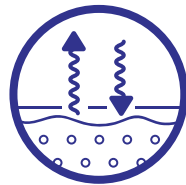
For Export Only



Tip pressure sensor



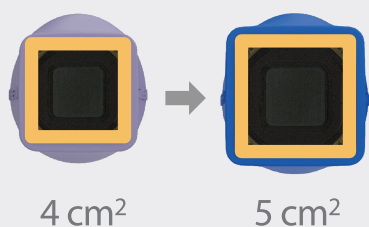
Tip temperature sensor



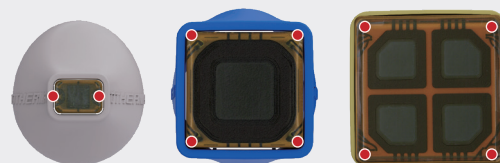
Skin impedance checking system



Continuous shot function



25% bigger tip size
20% IMPROVED EFFICIENCY

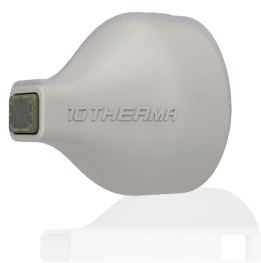


Safe treatment using
temperature sensor

Eye tip

300 REPs
600 REPs

0.25 cm²

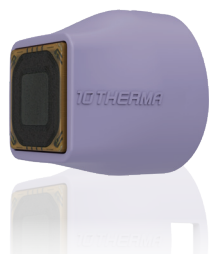


Delivers detailed and narrow thermal energy to smooth line and wrinkles near periorbital

Face tip 4.0

300 REPs
600 REPs
900 REPs

4.0 cm²

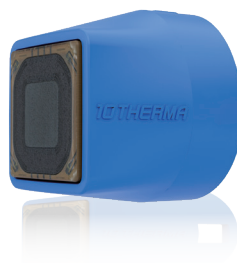


Delivers thermal energy to smooth line and wrinkles

Face tip 5.0

300 REPs
600 REPs
900 REPs

5.0 cm²

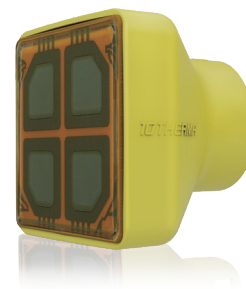


20% more efficient than 4.0cm² Face tip, delivers thermal energy to smooth line and wrinkles

Body tip

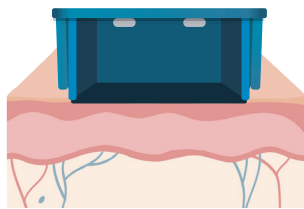
500 REPs
1000 REPs

20.0 cm²

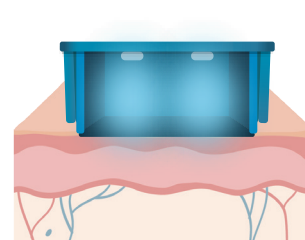


Delivers thermal energy for body tightening and body contouring

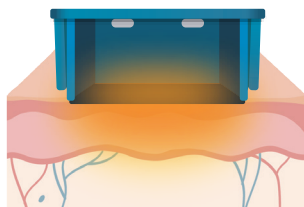
The art of vertical vibration technology



1
Treatment tip is positioned on skin

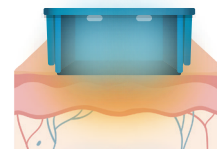


2
Vibration starts (if turned on). Two cryogen pulses release and protect the epidermis



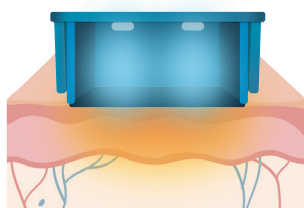
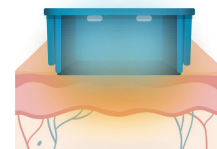
3
RF energy transmits deep into the tissue while cryogen pulse cools the epidermis. Vibration continues

VERTICAL VIBRATION

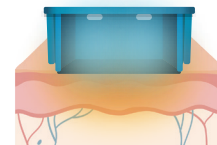


4
Additional three pulses of cryogen cool the epidermis. Deep RF energy and vibration continues

VERTICAL VIBRATION



5
Final two pulses of cryogen cool the epidermis. Vibration ends

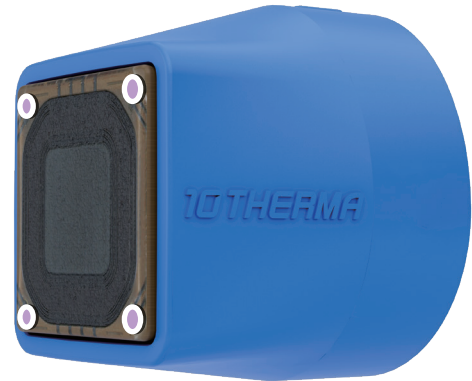


Vibration Anesthesia researched by Smith et al. (2004), finds that analgesic effect of vibration is beneficial in minimizing pain for patients undergoing dermatologic procedures. According to the gate control theory of pain hypothesized by Melzack and Wall, nerve fibers, which transmit information from vibration receptors, stimulate inhibitory interneurons in the spinal cord, reducing the pain signal. This is how 10THERMA's unique vertical vibration technology improves patient experience.

Next Generation Cooling System

S.T.C

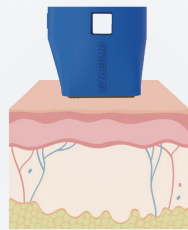
(Smart Temperature Cooling)
Delicately designed temperature sensor



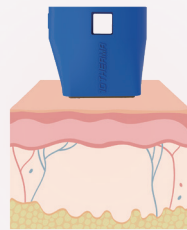
Maintains surface temperature constant
Reduce pain, safe and effective treatment

STC technology for safe and effective treatment

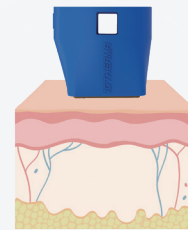
7 cooling pulses in 1 shot



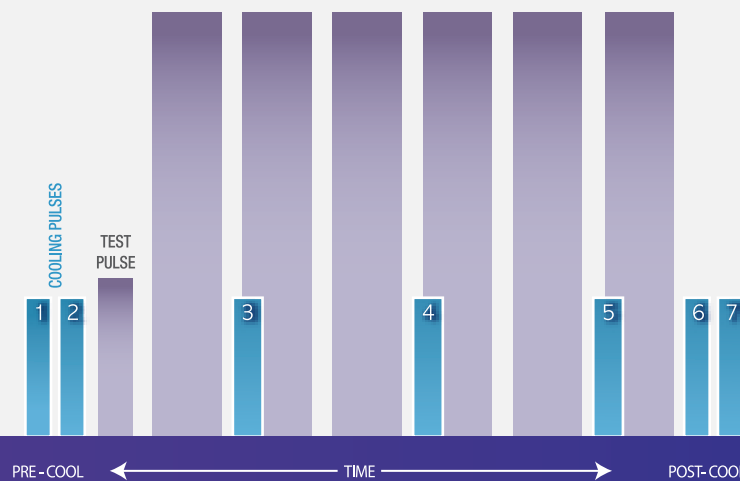
Pre cooling x 2



RF + Cooling x 3



Post cooling x 2

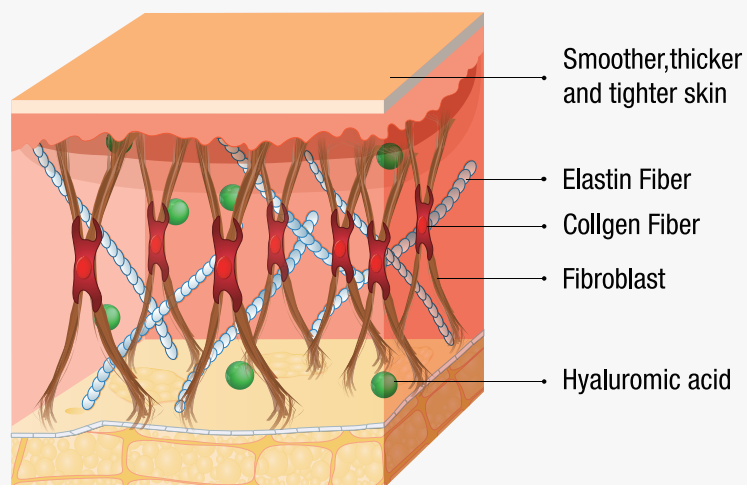


How 10THERMA Works

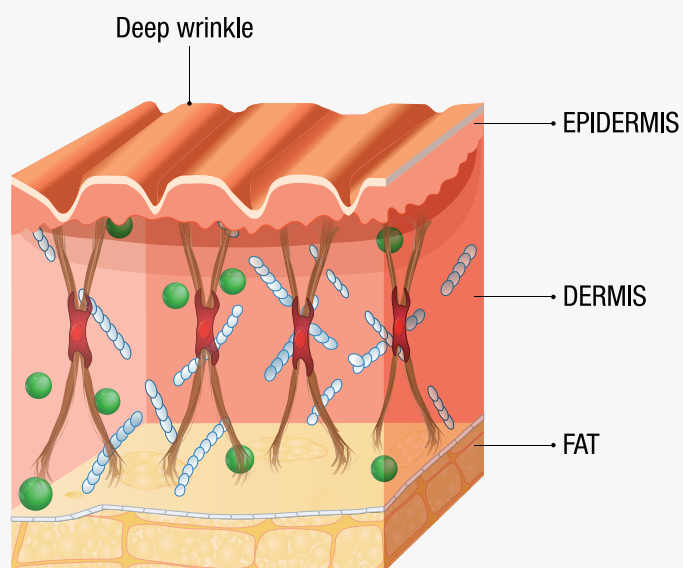
For Export Only

The theory of treatment (1)

With ageing, collagen binding is weaker and decreases.



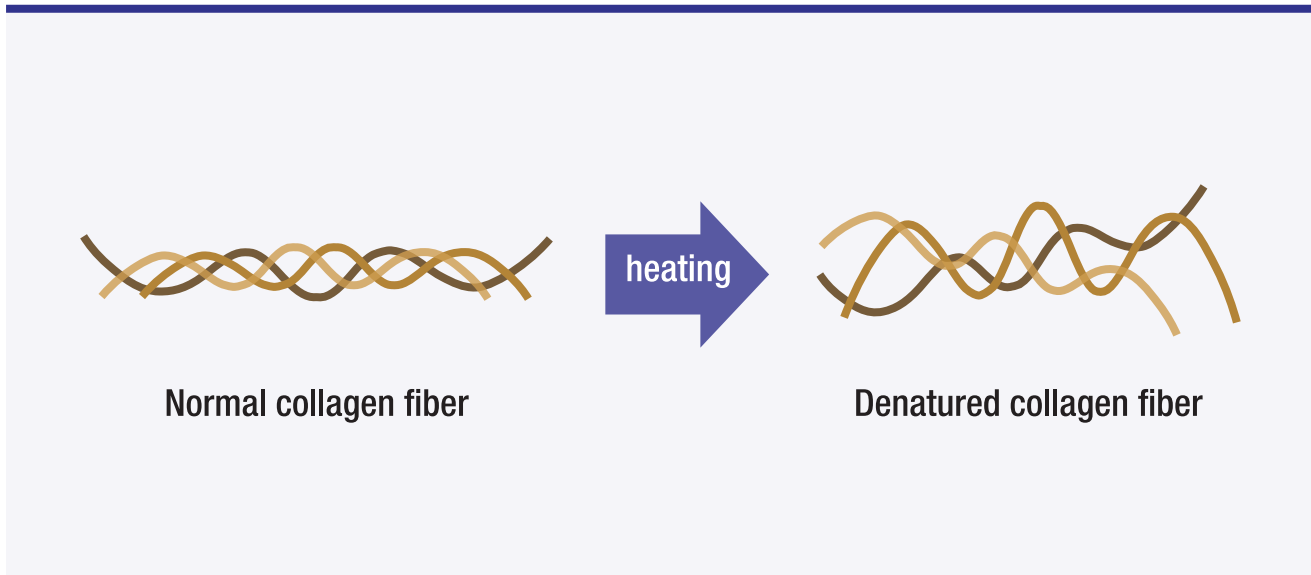
YOUNGER SKIN



OLDER SKIN

The theory of treatment (2)

RF heating leads to improve the density of collagen by the stimulation of dermal collagen fiber.



First stage: immediate collagen contraction

- Collagen shrunk after the separation of water molecules.
- The elasticity of the skin increases with dermal contraction.
- Skin contour improves by tightening the fibrous septum

Second stage: enhanced collagen remodeling in the healing process

- Improving skin's firmness and elasticity with the recovery of collagen
- The tightening effect becomes far more obvious than the first stage

Efficacy, Clinical Report ⁽¹⁾

For Export Only

Name : Comparative preclinical study on the safety and efficacy of 10THERMA and T* on Micropig

Institution : Gachon University Gil Hospital, Department of Dermatology

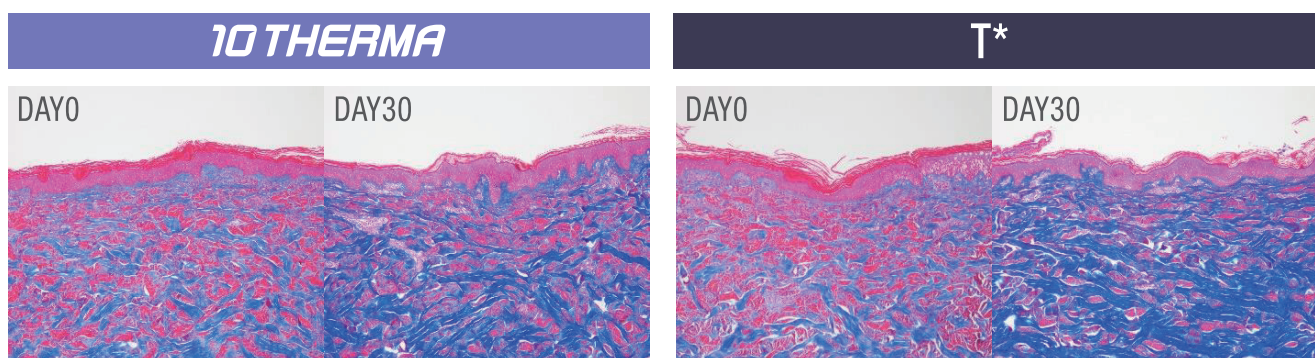
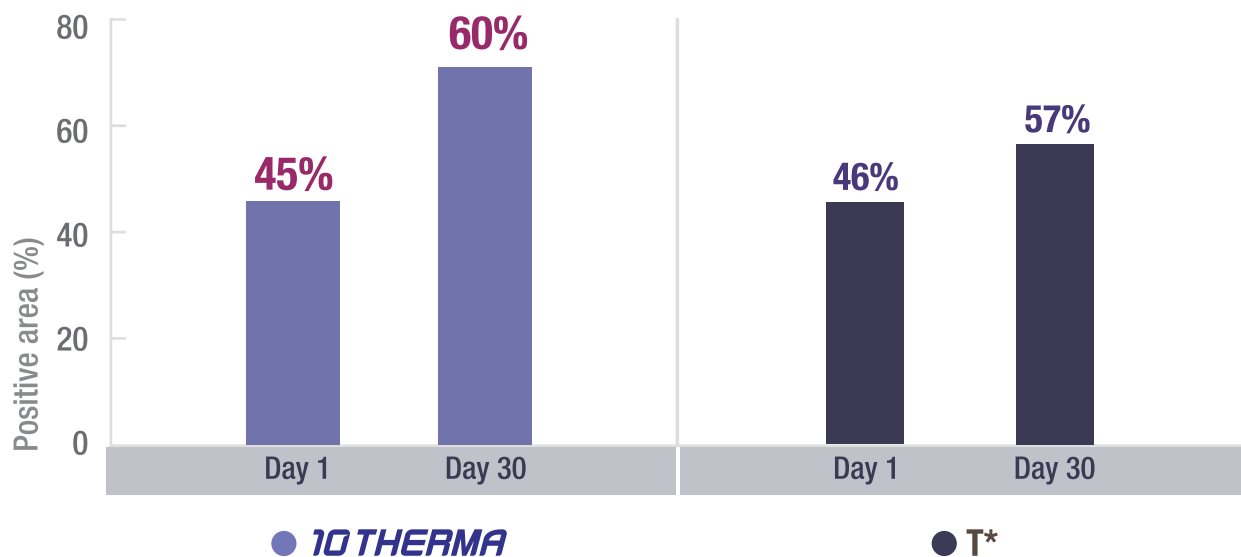
Period : 21.06.16~21.09.15

Result : Based on the results of studies in pig skin, having similar properties to human skin, 10THERMA and T* is considered to have similar efficacy and safety.

Masson's Trichrome

The area of collagen in normal pig skin is calculated to be approximately 45%.

As a result of Masson's Trichrome staining in this test, the **collagen area increased from 45% to 60% for 10THERMA** and from 46% to 57% for T* on the 30th day of the procedure compared to the 1st day, respectively.



1. Clinical report: Preclinical test report 16 Jun 2021-15 Sep 2021, Department of Dermatology, Gachon University Gil Hospital, Korea

Before & After

For Export Only





Dummy tip protects the handpiece when tip is not in use



For Export Only



“Smooth your wrinkles & lines by collagen production”

Q What kind of effects can I expect after 10THERMA treatment?

10THERMA is a monopolar radiofrequency procedure that safely transfers heat from the surface of the skin to help regenerate collagen in the skin. You can expect effects such as fine wrinkle, skin elasticity, pore, skin tone, and skin texture improvement.

Q When do you feel the effect of the procedure?

Collagen takes time to proliferate, effect will gradually improve after two to three months.

Q How is the treatment pain?

10THERMA uses cooling gas and vibration functions to prevent burns to the epidermis during radiofrequency heat transfer. The pain during the treatment is adequate and tolerable.

Q What are the post-treatment precautions?

10THERMA is a non-invasive procedure, safe with no downtime. Skin may feel dry temporarily after the treatment, so it is recommended to moisturize skin more than moderate amount.

10 THERMA

Monopolar RF / 400W

Spec.

Energy Type	Monopolar RF
Frequency	6.78 MHz
Max. RF Power	400 W
Impedance Range	75~400 Ω
Tips	Tip 0.25cm ² Tip 4.0cm ² Tip 5.0cm ² Tip 20.0cm ²
Dimension	W 405 x L 560 x H 1245 mm
Weight	46 kg
Electrical Requirement	AC 100 V - 240 V, 50/60 Hz, 600 VA



10 THERMA

Monopolar RF / 400W

