



10 PL

Fractional IPL

Tentech Item

10 PL

									
<p>10 THERMA Monopolar RF</p>	<p>10 THERA 2 Line HIFU</p>	<p>10 PL 168 Cell Fractional IPL</p>	<p>10 CELL 3cm x 3cm CO2 Fractional Laser</p>	<p>ONE THERA Dual Mode Ultrasound System</p>	<p>TEN HI Fractional & Thermal RF</p>	<p>10 SONO DSS & NBS Dual Mode System</p>	<p>LIPO THERA Dual Mode Ultrasound System</p>	<p>10 LUX High Intensity & Multiple Light Therapy Device</p>	<p>10 LUX HAIR PhotoBioModulation Device</p>
				<p>Rhino fill Premium Regevan fill volume MAX Regevan fill volume PRO Regevan fill volume UP Regevan fill Fine Monophasic Filler [for Export]</p>		<p>Regevan^{Ph} Polynucleotide Sodium</p>			
<p>Regevan^{LED} Mask Dr. Oracle LED Mask 4,474 LED Lights</p>	<p>10 mono Thread [Registered for NMPA]</p>	<p>10 cog Thread Asymmetrical Cog Thread</p>					<p>Regevan^C Growth Factor Ointment</p>	<p>Regevan^S Growth Factor Spray</p>	<p>Regevan^{ALO CARE} Growth Factor Ampoule</p>

10 PL

Fractional IPL

- ✓ Blemish • Freckle • Age spot
- ✓ Pigmentation • Cafe au Lait • Acne
- ✓ Partial lentiginosis • Flushing

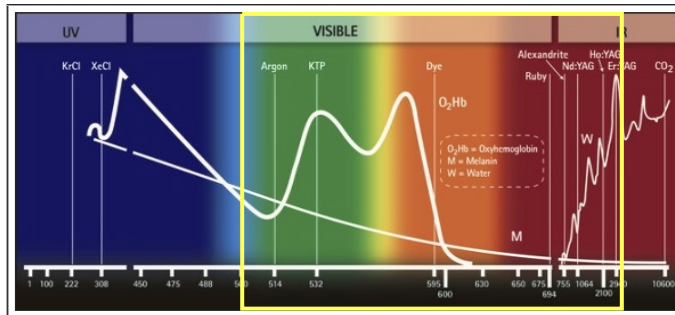


About 10PL

10PL



10PL is an IPL device that significantly lowers the risk of burns by applying the fractional treatment concept to the existing IPL. Also, the tip size is 45mm X 18mm, which allows for quick treatment of large areas

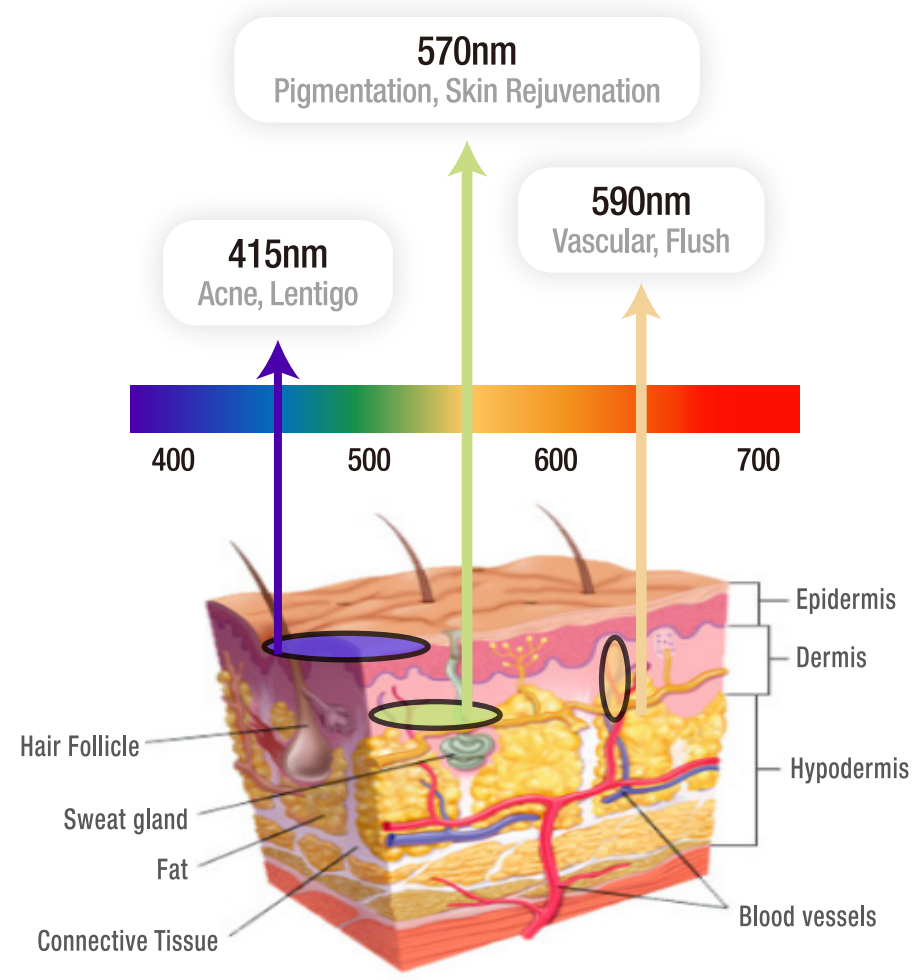


IPL is..

Intense Pulsed Light emits light of multi-wavelength in the form of strong pulse, From 400~1,200nm wavelength and is effective for treating **Acne, Pigmentation, Flushing, etc.**

IPL and Laser Comparison

	IPL	LASER
Wavelength	Multiple wavelength	Single wavelength
Treatment areas/effects	Simultaneously treats lesions such as pigmentation, vascular, pore, elasticity	Treats single lesion
Down time	Daily life activities immediately after treatment	1-10 days depending on the laser
Pain	Anesthetic cream	Anesthetic cream or local anesthesia

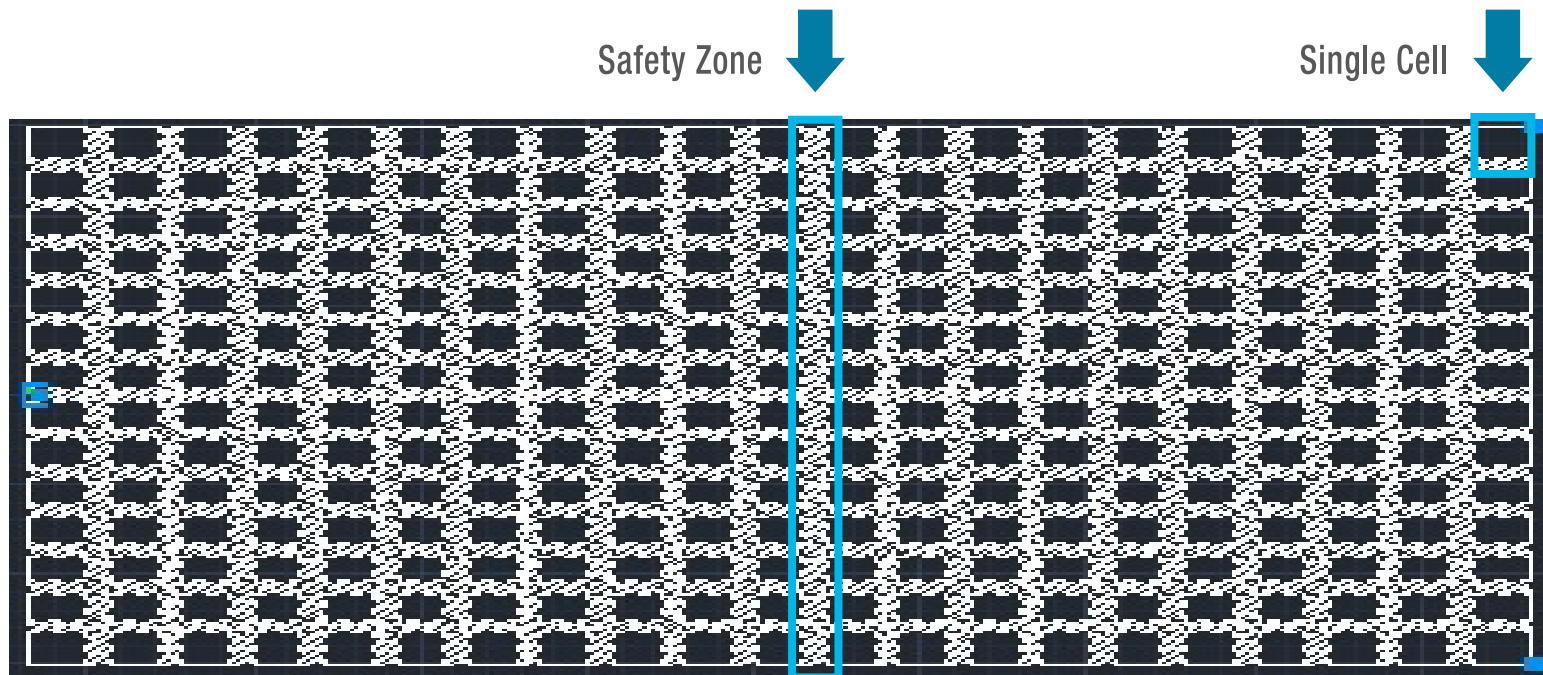


Technical Specification	
Light Source	Intense Pulsed Light (Xenon Lamp)
Standard Spectra (Wavelength)	415nm / 570nm / 590nm
Energy Density (Fluence)	5-35 J/cm ²
Spot Size	45 x 18 mm
Pulse Sequence	Single , Double , Triple pulses
Pulse Duration	2.0 ~ 35ms
Pulse Delay	3.0 ~ 60ms
Repetition Rate	0.5 ~ 1 Hz ± 10% (Max, Energy Fluence)
Light Conduction	Sapphire Contact Coupling

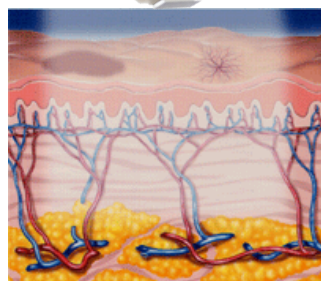
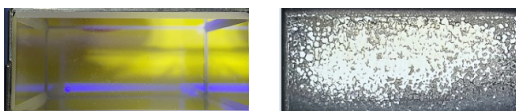
System Specification	
Electrical Power	220 V, Single Phase, 50/60 Hz, 16 Amps at 220V AC
Dimension	378 mm(W) x 560 mm(L) x 1070 mm(H)
Weight	73 Kg

1) Fractional IPL allows increased safety

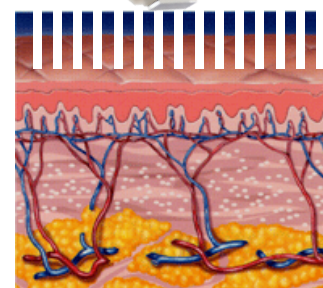
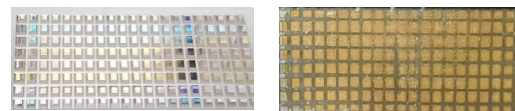
Through 168 Cells (each 1.4 x 1.59mm), thermal damage transmitted to the epidermis is minimized, and safe and effective treatment is possible even with higher energy.



Conventional IPL



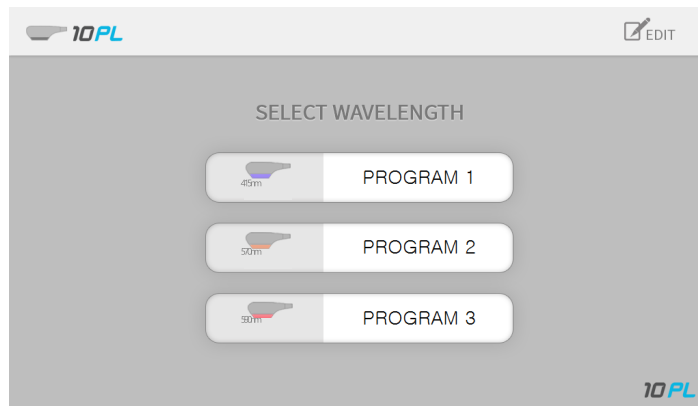
10PL



VS

2) Select Wavelength using Turn Dial

Treat various lesions with three wavelengths without exchanging filters!



Wavelength (nm)	Rotary switch symbol
415	4
570	5
590	9

3) 45mm x 18mm tip size reduces treatment time

38x10mm

35x15mm

45x18mm

Other

10PL

4) Fast Procedure with Beam
Irradiation Speed of 1Hz or less

5) Treat Blemish using 35J High Power Fractional Beam



10PL is for patients who..

10PL

- concerned about freckles, age spots, blemishes, black spots, and pigmentation
- worried about cafe au lait, nevus spilus, and Partial lentiginosis troubled with redness and acne



10 PL

All information in this document is subject to copyrights and other intellectual property rights of Tentech Inc. and other licensees. No modification, reproduction or copy of any or any part of this material may be made without prior written permission from Tentech Inc. and licensees. Additional information is available upon request. The following are trademarks or registered trademarks of Tentech, Inc. in Korea and other countries.

